

MARTIN MARINE



2017 MARTIN MARINE DEEP COVE REGATTA

September 9 - 10, 2017

Deep Cove Yacht Club

North Vancouver, BC

A VANCOUVER AREA RACING COUNCIL EVENT SAILING INSTRUCTIONS

1. RULES

- 1.1 The Organizing Authority for the Regatta is Deep Cove Yacht Club.
- 1.2 The regatta will be governed by the rules as defined in *The Racing Rules of Sailing*.
- 1.3 PHRF boats will sail according to the rules of PHRF BC. ORC Club boats will sail according to rules of the Offshore Racing Congress.

2. NOTICES TO COMPETITORS

Notices to competitors will be posted on the official notice board located in the basement of the Deep Cove Yacht Club.

3. CHANGES TO SAILING INSTRUCTIONS

Any change to the sailing instructions will be posted before 0900 on the day it will take effect, except that any change to the schedule of races will be posted by 2000 on the day before it will take effect.

4. SCHEDULE OF RACES

4.1 Dates and number of races

The number of races will be dependent on the prevailing conditions

Saturday, September 9 1055 – warning signal for first race

Sunday, September 10 1055 – warning signal for first race

- ##### 4.2
- The warning signal for each succeeding race will be made as soon as practicable. Boats are to remain in the starting area until informed that racing is over for the day.

- ##### 4.3
- On the last day of the regatta no warning signal will be made after 1400hrs.

MARTIN MARINE

5. CHECK-IN

All boats must check in with the Race Committee by sailing past the signal boat within two boatlengths to leeward or over VHF 72 at least 5 minutes prior to the first warning signal of the first race of each day.

6. RATINGS, SYSTEMS AND DIVISIONS

6.1	Division	Class Flag
	1 - ORC – GPH 610.0 or less	pennant 1
	2 - PHRF rating of 60-99	pennant 2
	3 - PHRF rating of 100-173	pennant 3
	7 - PHRF rating of 174-275	pennant 7

6.2 Divisions will be scored separately though some starts may be combined.

6.3 Owners of boats racing in the Keelboat Series under PHRF shall be members in good standing and boats shall have a certificate issued by of PHRF of British Columbia or PHRF Northwest. PHRF Northwest ratings will be adjusted by the race committee to ensure consistency with PHRF of British Columbia ratings. Ratings may be assigned by the Organizing Authority at their discretion to facilitate boats without a valid certificate. Assigned ratings shall not be grounds for protest or redress.

6.4 Keelboat Series PHRF boats will be scored under a time-on-time system.

7. RACING AREAS

The race areas are illustrated on the charts in Appendix A. Please refer to chart 3483 or 3311 for navigational purposes.

8. THE COURSES

8.1 Cates Park Course Area

The diagram in Appendix B shows the courses to be sailed and the order in which the marks are to be passed. All marks are to be left to port. If Mark 2 is set below the start/finish line it shall not be considered an obstruction i.e. boats may sail through the start/finish line on downwind or upwind legs as necessary.

MARTIN MARINE

8.2 Indian Arm Course Area

The diagram in Appendix A shows the locations of the starting areas, the location of the rounding vessel in area 'A' and the locations of the alternate finishing areas 'B' and 'C'. A race shall be from the start line, to the rounding mark(s) in area 'A' and to the finish line located as described in SI 12.3.

9. MARKS

9.1 Cates Park Course Area:

9.1.1 Mark 1 and mark 2 will be yellow inflatables, mark 1A will be an orange inflatable.

9.1.2 Mark 2 may be set below the start/finish line.

9.1.3 New marks will not be used to change the course, as outlined in instruction 11.

9.2 Indian Arm Course Area:

9.1.1 The rounding mark in area 'A' shall be a race committee markset vessel holding station and displaying code flag 'M' and shall be rounded to port. Failure of the markset vessel to hold station shall not be grounds for redress. All effort will be made however to remain accurately on station.

9.3 Mark S/F - will be a pin with red or orange shape or flag.

10. THE START

10.1 The starting line will be between a staff displaying an orange flag on the Race Committee vessel and Mark S/F.

10.2 There may be an inflated mark attached to the committee boat as a spacer mark. The spacer mark and any lines attached to it are considered part of the Committee Boat. Boats shall not sail between the spacer mark and the Committee Boat. Any boat sailing between the spacer mark and the Committee Boat may be subject to protest by the race committee. Furthermore, any boat that contacts the Committee Boat itself shall be subject to disqualification from the particular race in sequence, or the series, at the discretion of the Organizing Authority, without a hearing, and such disqualification shall not be grounds for redress or appeal.

10.3 Boats whose warning signal has not been made shall avoid the starting area. The starting area is 75 metres from the starting line in all directions.

10.4 A boat starting later than 4 minutes after her starting signal will be scored Did Not Start without a hearing. This changes rule A4.

10.5. If any part of a boat's hull, crew or equipment is on the course side of the starting line during the two minutes before her starting signal and she is identified, the race committee will attempt to broadcast her sail number on VHF radio. Failure to make a broadcast or to time it accurately will not be grounds for redress. This changes rule 62.1(a).

10.6 The race committee will attempt to announce the sail numbers or boat name of OCS

MARTIN MARINE

boats on VHF 72. Failure to announce sail numbers or names of OCS boats shall not be grounds for redress. This changes rule 62.1(a).

Indian Arm Course Area

10.6 The starting line shall be located at either the 'Lone Rock' starting area or 'Twin Island' starting area. The Race Committee shall announce with area it intends to start at on VHF 72. The race committee signal boat may not be securely anchored due to water depth and will hold station. Failure to hold station accurately shall not be grounds for redress.

11. CHANGE OF THE NEXT LEG OF THE COURSE

The race committee will endeavour to maintain the course configuration in the event of changing conditions.

12. THE FINISH

The finishing line will be between mark S/F and an orange flag on the race committee boat.

Indian Arm Course Area

12.3 There shall be three possible options for locating the finishing line. The finish will either be located at the starting area or at finishing area 'B' or finishing area 'C'. Announcement will be made on VHF 72 prior to the start or during the course of the race and will depend on conditions. The race may be started without declaring a finish area and boats are very actively encouraged to monitor VHF 72 throughout the duration of all races. The race committee signal boat may not be securely anchored due to water depth and will hold station. Failure to hold station accurately shall not be grounds for redress.

13. INTENTIONALLY LEFT BLANK

14. TIME LIMITS AND TARGET TIMES

14.1 Cates Park Course Area

- 14.1.1 The Mark 1/1a time limit shall be 45 minutes. If no boat has passed Mark 1/1a within the Mark 1/1a time limit, the race will be abandoned.
- 14.1.2 Target times will be 75 minutes for all classes. Failure to meet the target time will not be grounds for redress. This changes rule 62.1(a).
- 14.1.3 Boats failing to finish within 30 minutes after the first boat in each division or class sails the course and finishes will be scored Did Not Finish without a hearing. This changes rules 35, A4 and A5.

14.2 Indian Arm Course Area

- 14.2.1 The time limit will be four hours.

MARTIN MARINE

- 14.2.2 Boats failing to finish within 60 minutes after the first boat in each division or class sails the course and finishes, or within the time limit, whichever is later, will be scored Did Not Finish without a hearing. This changes rules 35, A4 and A5.

15. PROTEST AND REQUESTS FOR REDRESS

- 15.1 Protest forms are available on the notice board is located in the lower deck hallway near the waterside door. Protests shall be delivered to the Principal Race Officer or DCYC Fleet Captain.
- 15.2 For each division, the protest time limit is 60 minutes after the RC boat has reached the dock after the last race of the day.
- 15.3 Notices will be posted no later than 30 minutes after the protest time limit to inform competitors of hearings in which they are parties or named as witnesses.
- 15.4 Notices of protests will be posted to inform boats.
- 15.5 **Protests will be heard at Deep Cove Yacht Club on Tuesday, September 12, 2017.**
- 15.6 For the purpose of rule 64.3(b) the 'authority responsible' is the measurer appointed by the organizing authority.
- 15.7 Breaches of instructions 5, 6.3, 10.4, 17, and 19.1 will be grounds for a protest only by the race committee. This changes rule 60.1(a). Penalties for these breaches may be less than disqualification if the protest committee so decides.

16. SCORING

- 16.1 One race shall constitute a series.
- 16.2 A boat's series score will be the total of her race scores, there will be no throwouts.
- 16.3 To request correction of an alleged error in posted race or series results, a boat shall request in writing to the Principal Race Officer.

17. SAFETY REGULATIONS

- 17.1 A boat that impedes or obstructs commercial traffic, or sails between a tug and its tow, will be disqualified. The disqualification may be for the race or for the series, at the discretion of the protest committee.
- 17.2 A boat which retires from a race shall notify the race committee or an official boat before leaving the course area or, if that is impossible, immediately after arriving ashore.
- 17.3 Competitors are reminded of the Fundamental Rules of the RRS: Helping those in Danger, Life-Saving Equipment and Personal Buoyancy, and Decision to Race. Competitors are also reminded of the minimum safety equipment required by law to be carried on all boats, and safe boating practices described in the Safe Boating Guide published by Transport Canada.
- 17.4 While racing, a boat shall carry sufficient fuel to motor from the farthest part of the course to the host venue.

MARTIN MARINE

18. EQUIPMENT AND MEASUREMENT CHECKS

A boat or equipment may be inspected at any time for compliance with the class rules and sailing instructions. On the water, a boat may be instructed by the race committee to proceed immediately to an area designated for inspection at the time of the request.

19. RADIO COMMUNICATION

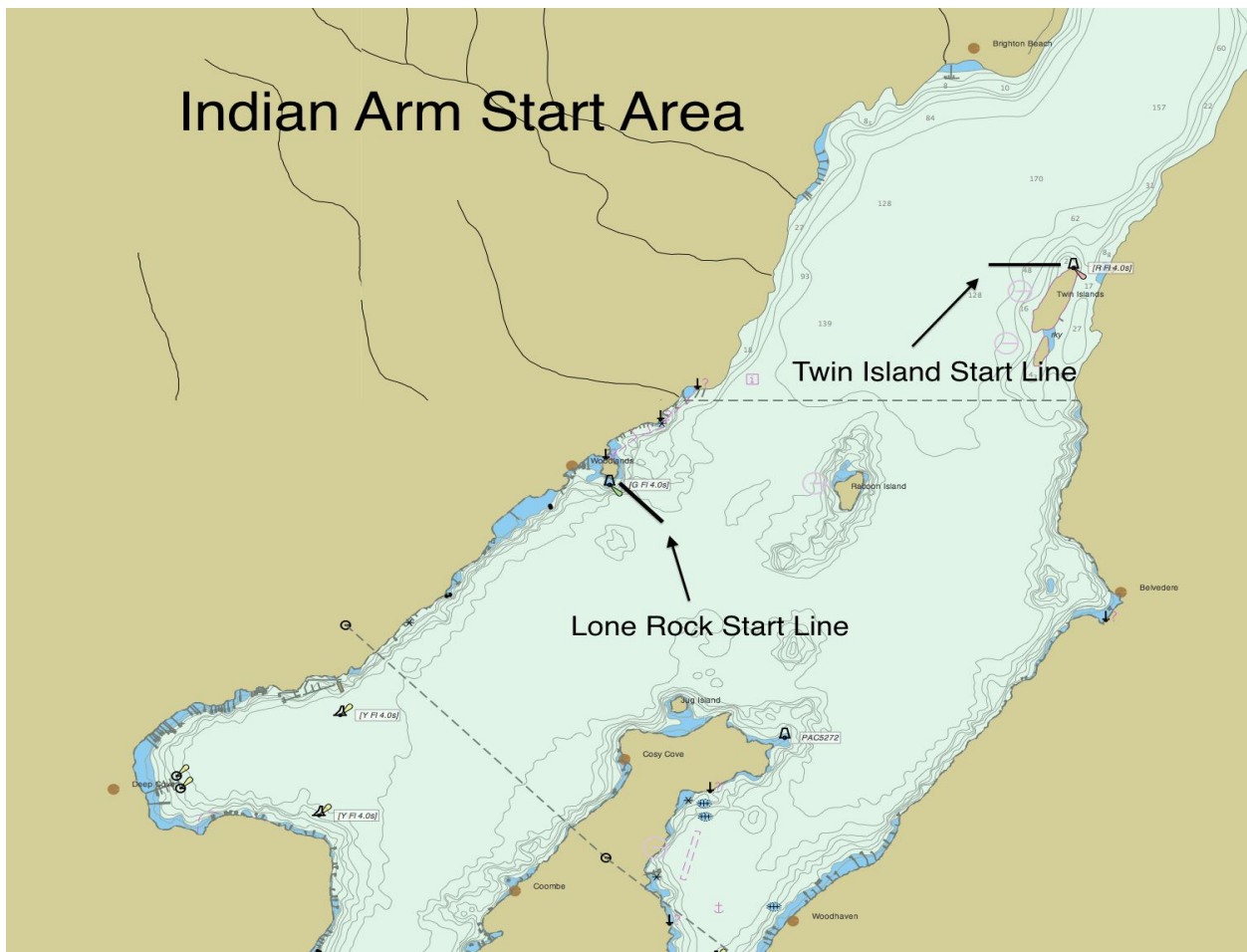
- 19.1 Except in an emergency, a boat shall neither make radio transmissions while racing nor receive radio communications not available to all boats. This restriction also applies to mobile telephone.
- 19.2 Race Committee, at their own discretion, may use VHF radio Channel 72 to announce information to competitors. These announcements may include but not be limited to, warning of the start sequence for each class, boats over early, and any other general information for competitors. Radio announcements are a courtesy, failure to make announcements or failure to receive and interpret accurately will not constitute grounds for redress.

20. DISCLAIMER OF LIABILITY

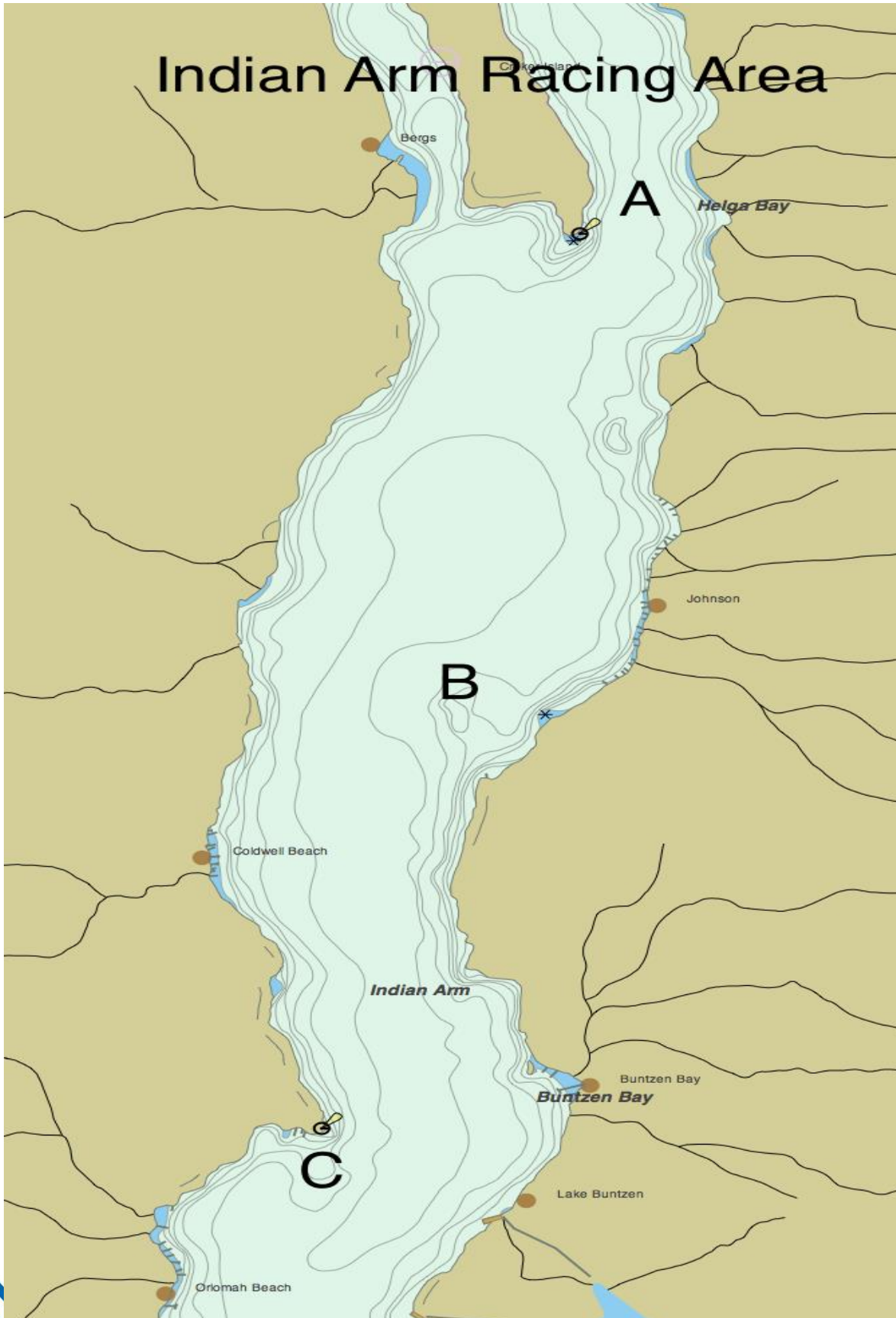
Competitors participate in the regatta entirely at their own risk. See rule 4, Decision to Race. The organizing authority will not accept any liability for material damage or personal injury or death sustained in conjunction with or prior to, during or after the regatta

MARTIN MARINE

APPENDIX "A" – COURSE AREAS

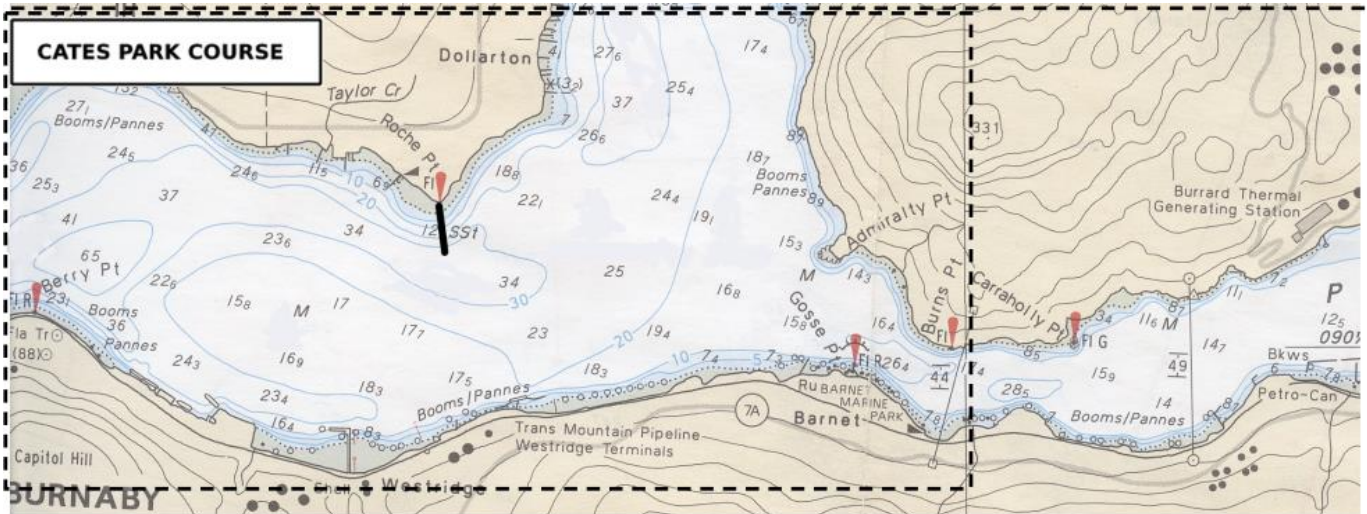


MARTIN MARINE



MARTIN MARINE

Cates Park Course Area



MARTIN MARINE

APPENDIX "B" – THE COURSES

Indian Arm Course Area (refer to SI 8.2)

Cates Park Course Area

Course Placard	Sequence of Marks
1	Start – 1 - Finish
2	Start – 1 – 2– 1 - Finish
3	Start – 1 – 2– 1 - 2– 1 - Finish
4	Start – 1A - Finish
5	Start – 1A – 2– 1A - Finish
6	Start – 1A – 2– 1A - 2– 1A – Finish

